

# Directions to Norton Brownsboro Hospital

## From I-71 north or south

- Take I-71 north or south to I-265 south (Gene Snyder Freeway), exit 9A.
- Keep right, and take Brownsboro Road, exit 34.
- Turn left (east) at the traffic light onto Brownsboro Road.
- Turn left at the next traffic light onto Norton Healthcare Boulevard.

## From I-265 north (Gene Snyder Freeway)

- Take I-265 north to Brownsboro Road, exit 34.
- Continue straight off the ramp (crossing Brownsboro Road) directly onto Norton Healthcare Boulevard.

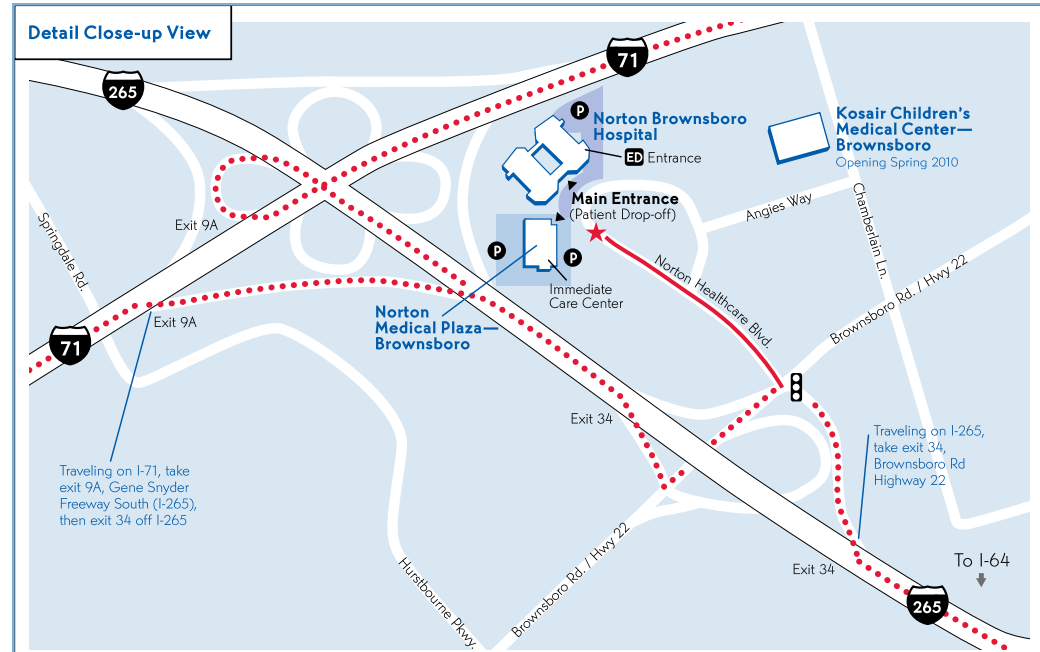
## From I-265 south (Gene Snyder Freeway)

- Take I-265 south to Brownsboro Road, exit 34.
- Turn left at the end of the ramp onto Brownsboro Road.
- Turn left at the next traffic light onto Norton Healthcare Boulevard.

*Free parking is available in the surface lot around the hospital.*

## Norton Healthcare Access Center

For questions about directions or lodging or for additional information, call the Norton Healthcare Access Center 24 hours a day at **(888) 4-U-NORTON/(888) 486-6786**, option 3, or visit **NortonHealthcare.com**.



**Norton Brownsboro Hospital**  
4960 Norton Healthcare Blvd.  
Louisville, KY 40241  
(502) 446-8000  
NortonBrownsboroHospital.com

